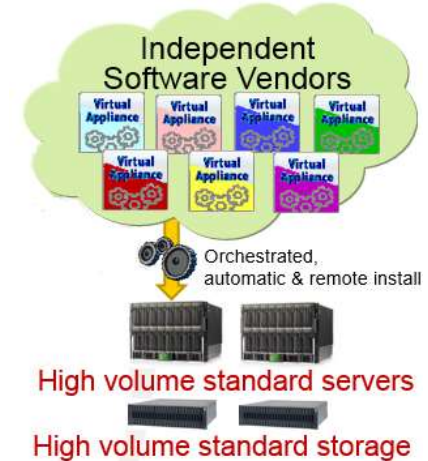


Anuta NCX - NFV Support

Why NFV (Network Functions Virtualization)

- Accelerated Time-to-Market
- Reductions in OpEX and CapEX
- Elasticity
- Resilience, speed and agility
- Applicable to any data plane packet processing and control plane function
- Standard virtualization technology and commodity hardware used
- Resource optimization



NFV Challenges

- Service Models
- Service Design

Service
Definition



- Multi-vendor
- On-Demand
- Capacity and Network Awareness

Service
Orchestration



- Scaling based on
 - Network
 - Service
 - End-User action

Dynamic
Loads

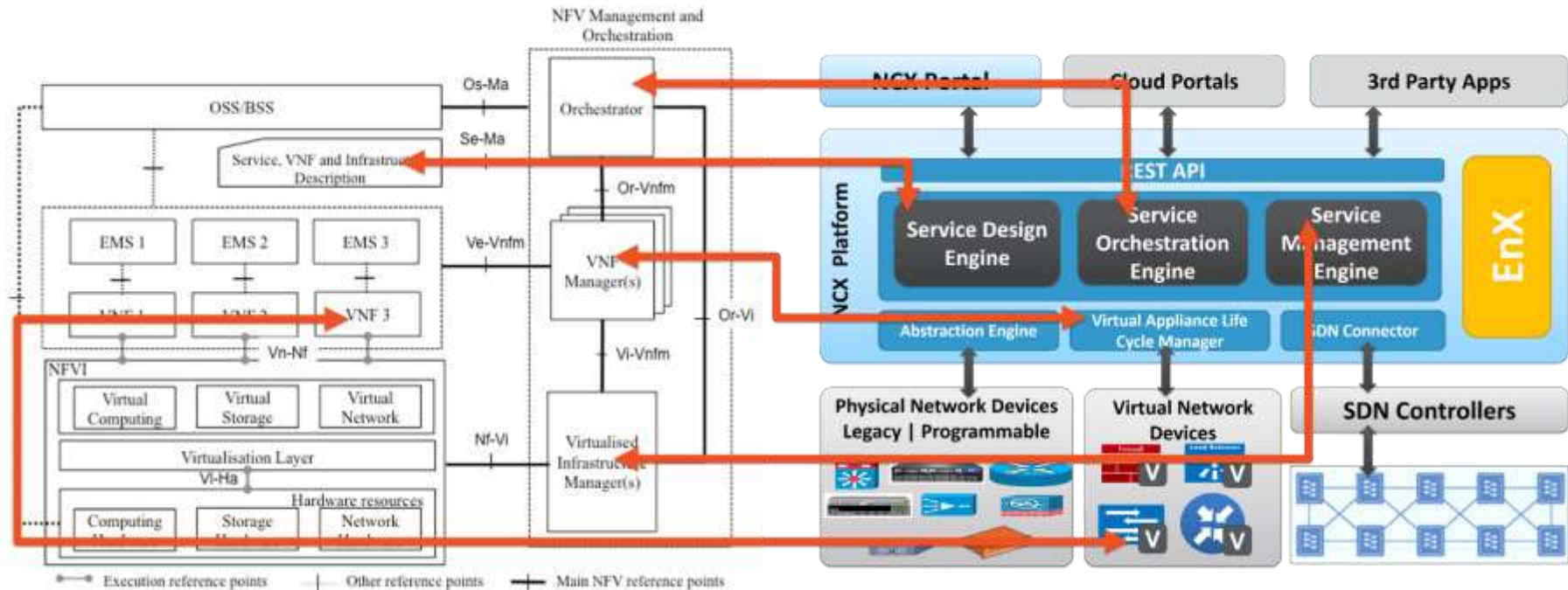


- Image Management
- License Management
- Placement
- Hybrid Architectures

VNF Lifecycle
Management



Anuta NFV Support

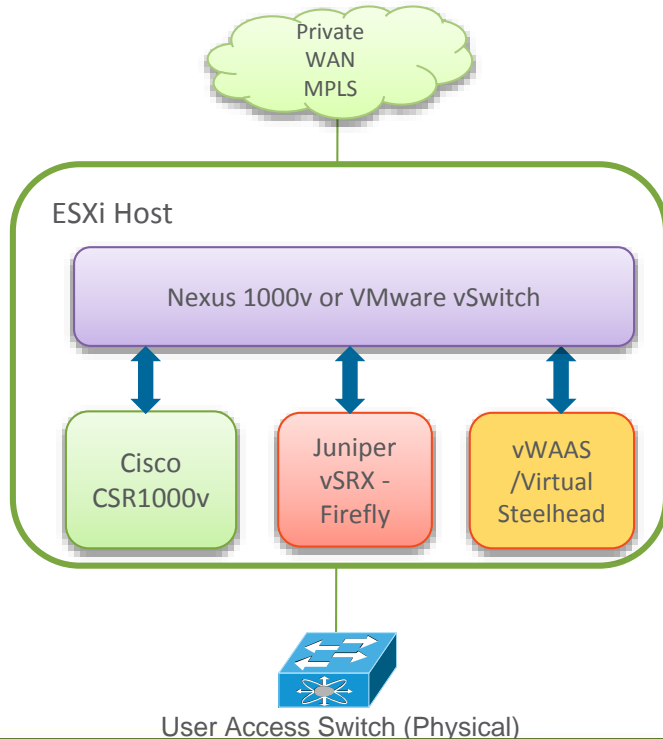


NCX Virtual Appliance Life Cycle Management

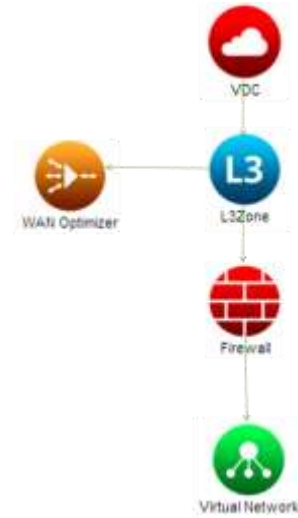


Virtual CPE

Physical Topology



Logical Topology

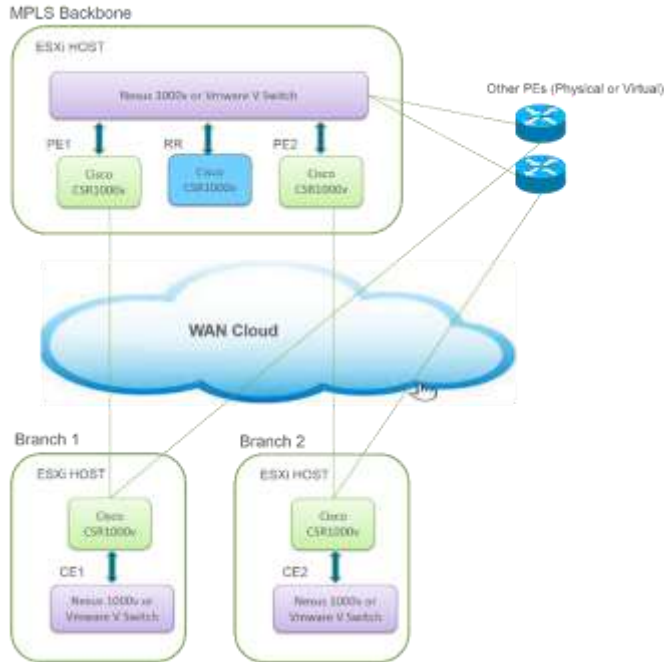


Use cases

- Support for CPE Functions
 - L3 Termination
 - DMVPN, L3 VPN, FlexVPN
 - Zone based Firewall
 - Wan Optimization
 - Web Security
- Vendors Supported
 - Cisco CSR 1000V
 - Juniper Firefly Perimeter, Firefly Host
 - Riverbed Virtual Steelhead
 - Checkpoint VSG

Virtual MPLS Backbone and Edge

Physical Topology



Logical Topology

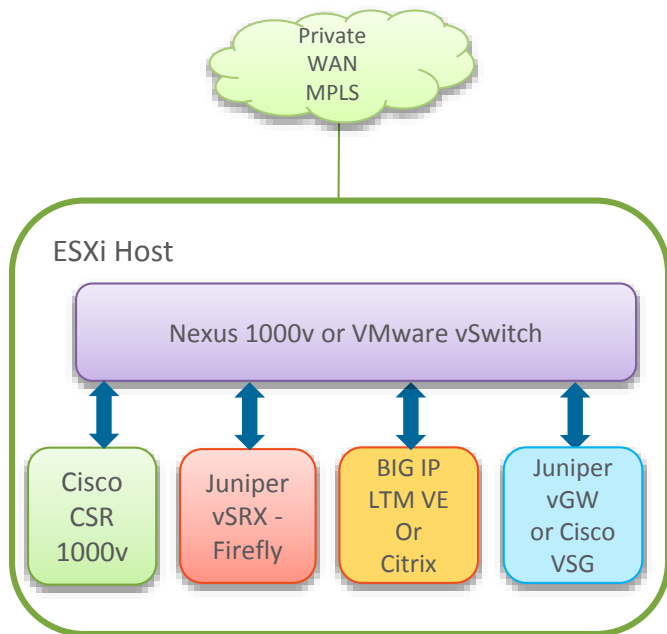


Use cases

- Support for Virtual
 - PEs
 - CEs
 - Route Reflectors
- Vendors Supported
 - Cisco CSR 1000V

Virtual Data Center

Physical Topology



Logical Topology



Use cases

- Support for Virtual
 - Router
 - Firewall
 - Load Balancer
 - WAN optimization
 - Switch
- Vendors Supported
 - Cisco CSR 1000V
 - F5 LTM VE
 - F5 GTM VE
 - Citrix NetScaler
 - Radware ADC-VX

NCX Solution Benefits

- Orchestration across Physical and Virtual Appliances
- Virtual Appliance Life Cycle Management
- Orchestration across Branch, Campus, Data Center & Carrier Networks
- Multi-vendor VNF Support
- OPEX Reduction, Improved Customer Satisfaction
- Complete Analytics for the Network